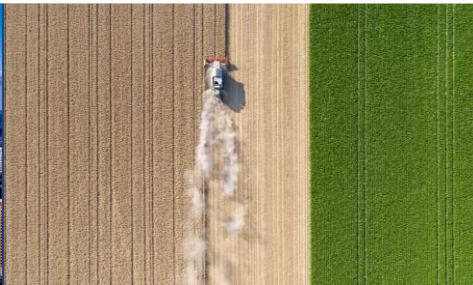


2022 Regulatory Emissions Modeling Platform Quarterly Update

National Emissions Collaborative

February 7, 2024



Agenda

- Summary of activities and accomplishments to date
- 2022 EMP data submittal
- Updates by sector and workgroup
- 2022 EMP data review tool update
- Version 1 review period and kickoff
- Schedule reminders
- Next steps



2022 EMP Collaborative

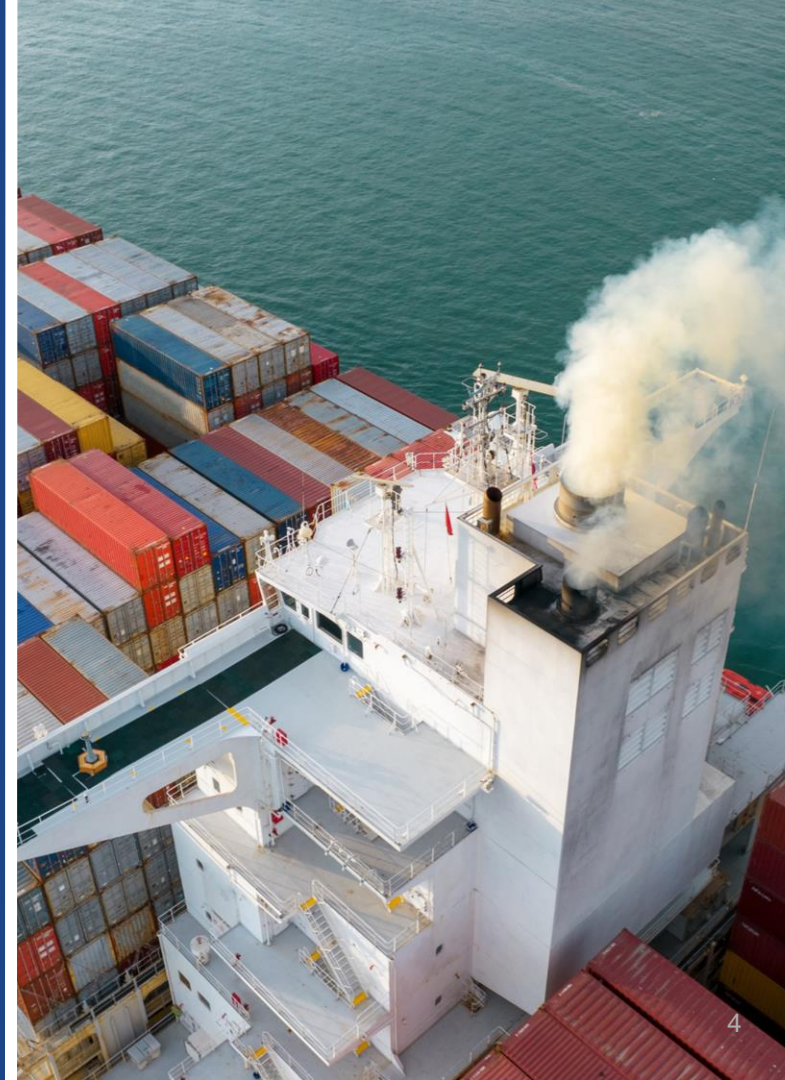
- Co-leads
 - Zac Adelman (LADCO), Mary Uhl (WESTAR), and Alison Eyth (EPA OAQPS)
- Communication support
 - Tom Richardson (OK DEQ), Tom Moore (Denver/NFR RAQC), Rhonda Payne (WESTAR/WRAP)
- Coordination Committee
 - 28 members from MJOs, state agencies, and US EPA staff from OAQPS, OTAQ, and CAMD
 - Monthly calls
 - Quarterly outreach webinars
- Workgroups
 - Leverage existing national emissions workgroups
 - Some 2022-specific workgroups have been created, e.g., fires and projection



2022 EMP Communications Plan

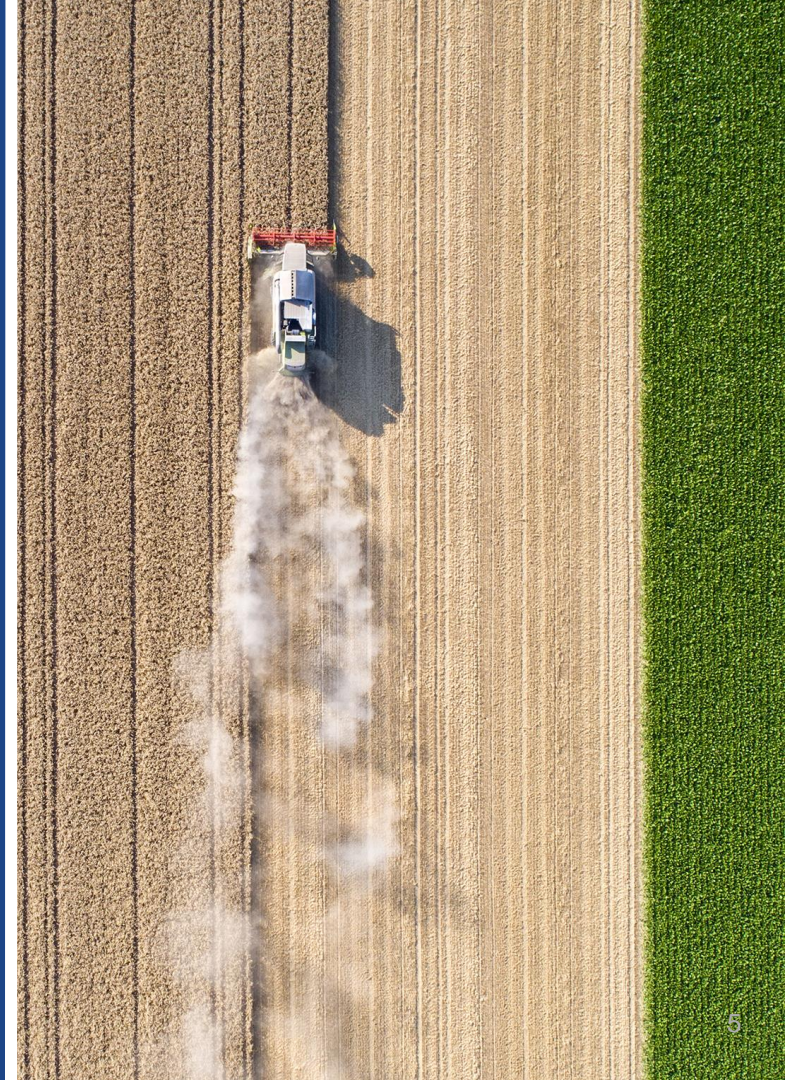
Goals of Outreach

- Broaden engagement via targeted outreach to national and regional committee and workgroup meetings throughout the project lifecycle
- Augment and reinforce mainstream EMP work as communication facilitators and advocates
- Emphasize the importance of involvement in deciding EMP data to represent your jurisdiction



Key Topics to Cover Q1 2024

- Summarize inputs EPA has received from SLTs by emission sector to be included in 2022v1 (today's slides)
- Status of 2022v1 development
- Status of tools for data sharing and review (wiki, evaluation & review tools)
- Purpose of April review window
- Connect SLTs with working groups
- Timeline, future key milestones



4th Quarter 2023 Meetings - Communications Outreach

October 2023

Oct. 12	National Oil & Gas Emissions Emissions Committee	Contact: Jeff Vukovich
19	MJO MOVES Workgroup	Contact: Debbie Wilson
24	GenSARA Fall Business Meeting	Contact: Michael Vince
25	WRAP Technical Steering Committee	Contact: Rhonda Payne
26	National EGU Workgroup / Projections Task Force	Contact: Serpil Kayin
26	AAPCA Emissions Inventory Committee	Contact: Morgan Dickie

November – December 2023

Nov. 1	OTC Special Topics meeting	Contact: Paul Miller
6	Northeast EI Leads meeting	Contact: Susan McCusker
13	WRAP Fire and Smoke Workgroup	Contact: Rhonda Payne
13	CMV Committee	Contact: Debbie Wilson
15	NOMAD Committee	Contact: Jennifer Snyder
16	NOGEC meeting	Contact: Jeff Vukovich
Dec. 5	NACAA Emissions and Modeling Committee	Contact: Karen Mongoven
19	NOGEC meeting (projection methods panel)	Contact: Jeff Vukovich

1st Quarter 2024 Meetings - Communications Outreach

Jan. 11	National Oil & Gas Emissions Emissions Committee	Contact: Jeff Vukovich
25	National EGU Workgroup / Projections Task Force	Contact: Serpil Kayin
25	AAPCA Emissions Inventory Committee	Contact: Morgan Dickie
31	WRAP Technical Steering Committee	Contact: Rhonda Payne
Feb. 6	NACAA Emissions and Modeling Committee	Contact: Karen Mongoven
7	2022 EMP Development Quarterly Update	<i>you are here...</i>
8	NOGEC meeting : Methane Rule ppt	Contact: Jeff Vukovich
15	MJO MOVES Workgroup (now a Teams Meeting) - 3rd Thursdays of each month at 3 Eastern	Contact: Marc Cone
21	CMV Committee - 3rd Wednesdays at 11 Eastern	Contact: Marc Cone
21	Nonpoint Methods Advisory Committee – 2 Eastern	Contact: Jennifer Snyder
22	National EGU Workgroup / Projections Task Force – 4th Thursdays at 2 Eastern	Contact: Serpil Kayin
Mar. 14	NOGEC meeting - 2nd Thursdays at 2 Eastern	Contact: Jeff Vukovich
26	Northeast EI Leads meeting	Contact: Susan McCusker

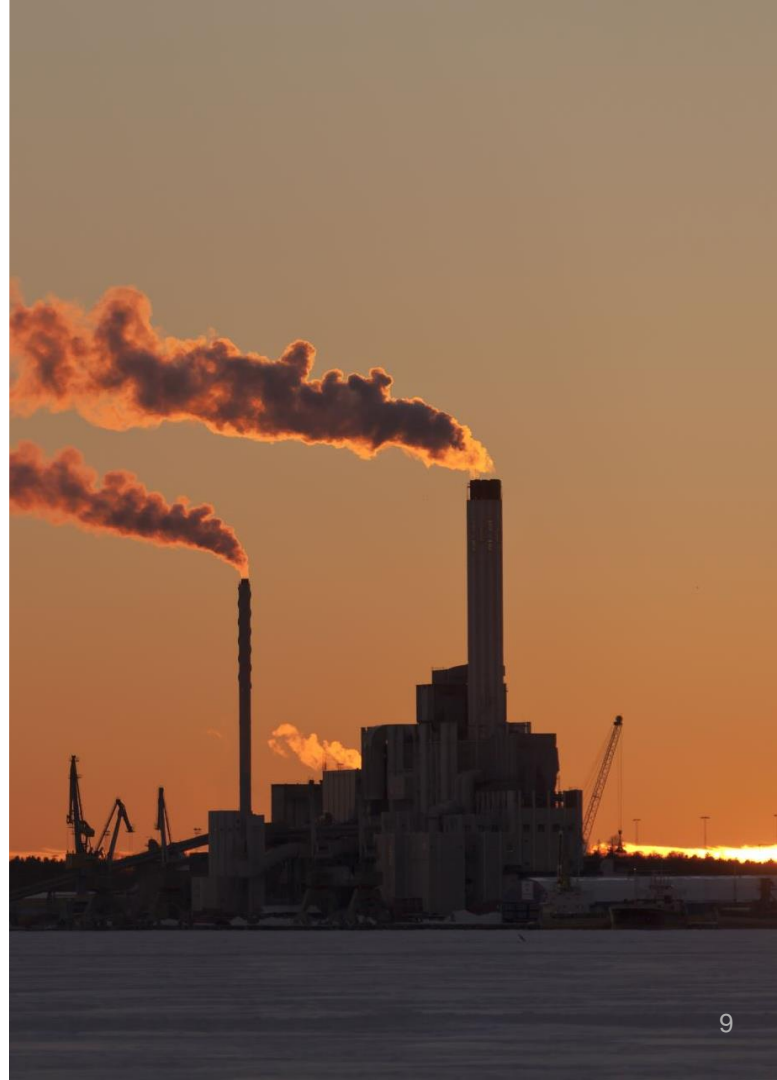
2022 EMP Data Submittal Overview

- Any data to be used in 2022v1 base year emissions were due by January 31, 2024
 - 2022 fire activity data (December)
 - 2022 VMT (December)
 - 2022 point sources into EIS (by Jan. 15)
 - Comments on 2020 nonpoint emissions except oil and gas for use as 2022 (Jan)
- Base year 2022 emissions review for all available sectors will be in April 2024



2022 Point Sources Update

- The draft 2022 point source inventory is available in the draft/point folder on FTP for 2022v1
 - FTP: <https://gaftp.epa.gov/Air/emismod/2022/v1>
- Comparisons with other recent point inventories will soon be developed and posted to the reports folder on the 2022 platform FTP site
- EGU and non-EGU projection task forces will be looking at these from various perspectives
 - Stack parameters and locations
 - Emissions values including data pulled forward from earlier years and where CEMS replaced EIS data
 - Base year control technologies



Onroad and Nonroad Update

- Preparing onroad emissions requires activity data and MOVES emission factors
- 2022 Vehicle Miles Traveled (VMT) activity data
 - Data have been submitted by CT, GA, MA, NY, MD, WA, ME, VA, CO, TN, AK, WV, KS, NH, NJ, OR, DE, SC, NC, TX, WI, MI, NC and Jefferson Co. KY
 - EPA is waiting on FHWA to provide VMT by county
- Schedule
 - Nonroad emissions were computed in January
 - Available onroad activity data will be shared with MOVES MJO workgroup in February
 - EPA will run MOVES4 for representative counties
 - Emissions will be computed in early March once all activity data and emission factors are finalized

Questions?

Contact Janice Godfrey
(godfrey.janice@epa.gov)

Other Mobile Sources Update

- Commercial Marine Vessels
 - Most 2022 activity data were received in January
 - Hourly C1C2 and C3 emissions will be computed over the next couple of months
- Locomotives
 - Will be based on 2020 NEI with updates from readily available data sources
 - Work is ongoing for line haul and rail yards
- Aircraft
 - Inventories are being computed for approx. the top 50 busiest U.S. airports
 - Other airport emissions will be adjusted from 2020 based on activity changes



Questions?

Contact Janice Godfrey
(godfrey.janice@epa.gov)

Collaborative Fires Workgroup

- Includes wildland, prescribed, and agricultural burn emissions
- Python SMARTFIRE2 used for daily acres burned
- Bluesky Pipeline (BSP) used for daily emissions
- Draft 2022 inventory created by EPA and shared with SLTs/MJOs/others on Nov 20, 2023
- Fire activity data received from SLTs
- Draft pile burn emissions provided to select states: feedback due Feb 16th
- Next Workgroup meeting after SLT data incorporated (late March or early April)
- Updated 2022 inventory generated and shared (by April 2024)
- 2022v1 fire inventory finalized (May/June 2024)

Interested in Participating?

Reach out to Jeff Vukovich
(vukovich.jeffrey@epa.gov)
or Rhonda Payne
(rpayne@westar.org)

Data Submitted for 2022 Fires

- SLTs that submitted activity data after the draft version included the following:
 - NJ, OR, TX, NM, DE, IA, ID, AZ, LA, ME, CT, SC, AR, CO, MD, PA, MN, MO, MT, ND, NV, UT, WY (23)
 - Tribes: Nez Perce and Coeur D'Alene
- States that supplied activity data for the draft version:
 - CA, GA, FL, NC, WA, Flint Hills (KS/OK)

Interested in Participating?

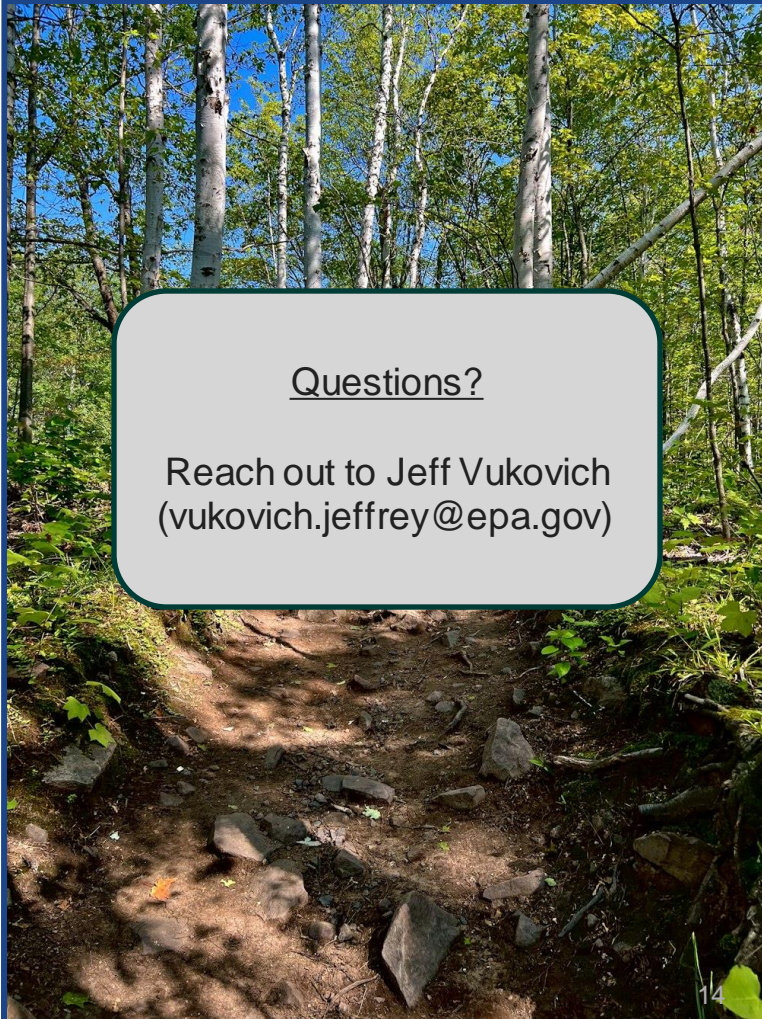
Reach out to Jeff Vukovich
(vukovich.jeffrey@epa.gov)
or Rhonda Payne
(rpayne@westar.org)

Biogenics Update

- Using Biogenic Emissions Inventory System version 4 (BEIS4) along with Biogenic Emissions Landcover Database version 6 (BELD6)
- Same configuration as used for the 2020NEI
- See 2020NEI TSD for details on BEIS4:
https://www.epa.gov/system/files/documents/2023-03/NEI2020_TSD_Section8_Biogenics_0.pdf
- EPA will make emissions summaries available during the 30-day review period
- CMAQv5.4 does also have BEIS4 available inline

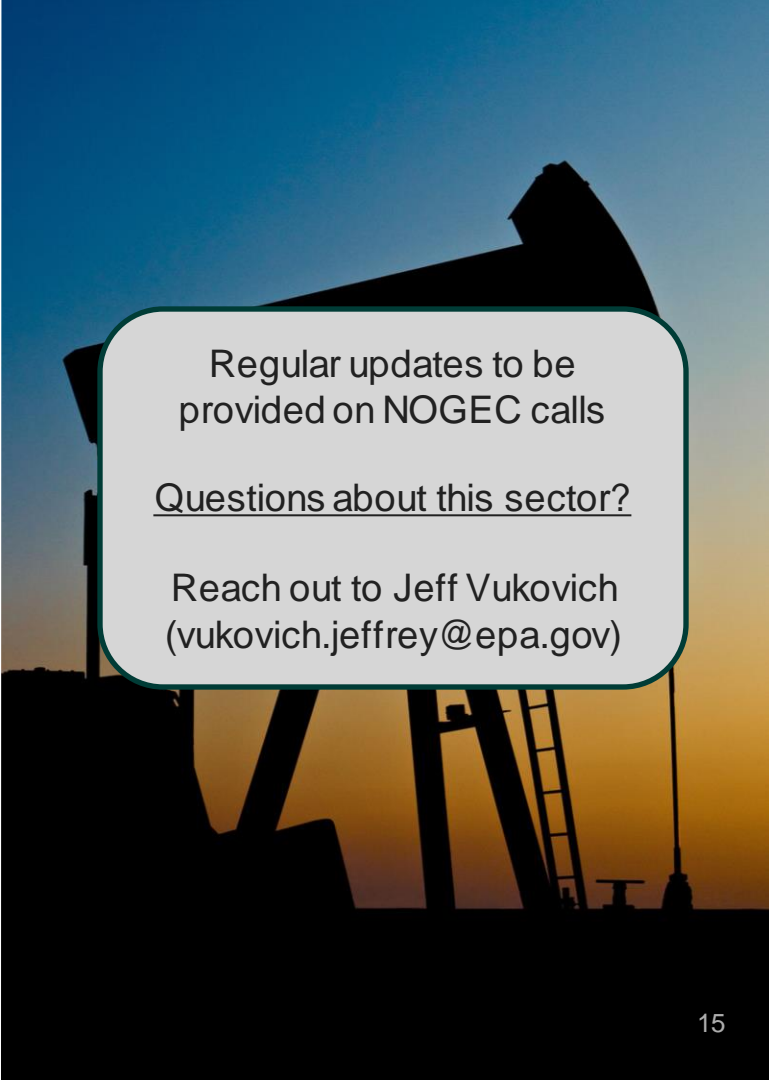
Questions?

Reach out to Jeff Vukovich
(vukovich.jeffrey@epa.gov)



2022 Oil and Gas Update

- Draft county activity provided on Jan 17
- SLTs have until Feb 19 to provide feedback on activity
- Oil and Gas Tool 2020NEI version with slight modifications to be used to compute emissions
- Draft emissions available (~March 2024)
- Oil and Gas point source information available (Feb 2024)
- Abandoned well emissions and Blowdowns/Pigging emissions to be estimated outside of Tool (Feb/Mar 2024)
- SLT/MJO/stakeholder review (April 2024)
- Year 2022 inventory finalized (May/June 2024)
- NOGEC Workgroup calls: Feb 8, March 14 and April 11




Regular updates to be provided on NOGEC calls

Questions about this sector?

Reach out to Jeff Vukovich
(vukovich.jeffrey@epa.gov)

2022 Oil and Gas Submitted Data

- Feedback and inventory data for base year submitted by the following states:
 - North Dakota: Capture Efficiency update
 - Colorado: 2022 Production-related emissions
 - Oklahoma: Technical direction for 2022 inventory
 - Wyoming: County activity for 2022
 - West Virginia: submitting Tool emissions
 - Kansas: interest in point source subtraction



Regular updates to be provided on NOGEC calls

Questions about this sector?

Reach out to Jeff Vukovich
(vukovich.jeffrey@epa.gov)

Projections Workgroup Update

- Organized into 6 Task Forces
 - EGUs, Other Point, Nonpoint, Mobile, Oil & Gas, & Marine/Airport/Rail
- December and January spent reviewing methods to estimate to 2022 emissions
 - Various approaches being used depending on the sector: 2022 actual, 2020 -> 2022, 2020 actual
 - Working to document the approach for each sector and reaching out to MJOs and states to facilitate reviews of the methods/data used for 2022v1
- February through May will focus on review of projection methods/data for each sector
 - Upcoming outreach to air agencies for non-EGU point control and shut-down information

Interested in Participating?

Reach out to Zac Adelman
(adelman@ladco.org) or
Alison Eyth
(eyth.alison@epa.gov)

Nonpoint Taskforce

- Nonpoint Projections Taskforce Meeting #3 was held on January 22, 2024
 - Finalized all but one base year projections method for nonpoint sources
 - Updated documentation on the approach selected for each sector - see wiki page (linked below)
- Next meeting: not yet scheduled
 - Next tasks – data review, future year projection methods
- Meeting notes and additional information can be found on the Nonpoint Wiki Page:
<https://views.cira.colostate.edu/wiki/wiki/12213>

Interested in Participating?

Reach out to Andy Bollman
(andrew.bollman@deq.nc.gov)
or Lindsay Dayton
(dayton.lindsay@epa.gov)

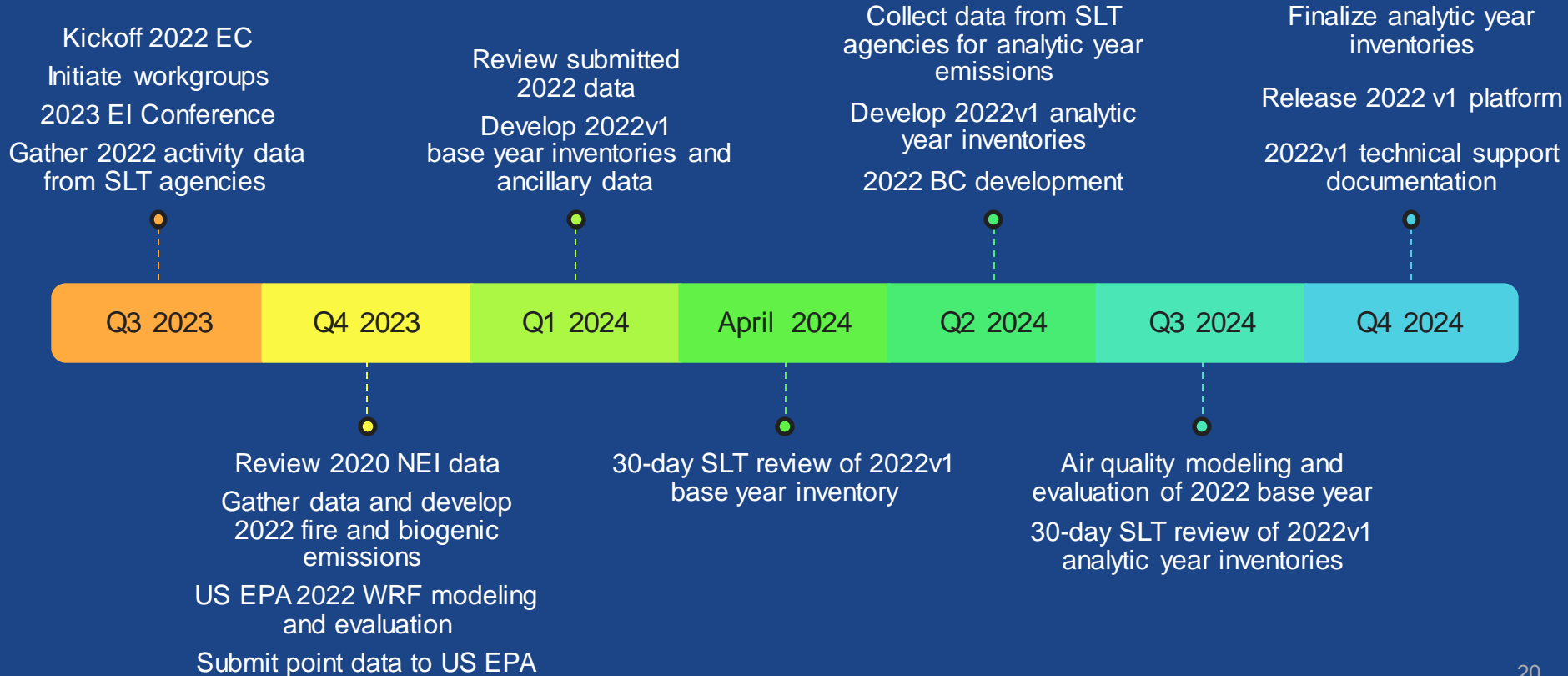
Nonpoint Taskforce Sectors

Source Category	Taskforce Proposed Projection Method
Fugitive Dust (Construction, Ag –Crops, Mining and Quarrying), Commercial Cooking, Portable Fuel containers, Asphalt Paving, Open Burning, Landfills/POTWs, Charcoal Grilling	Hold Constant
RWC – all subcategories, Stationary Source fuel combustion (includes non-Residential Biomass), Stage I Unloading at Gast Stations and Stage I Gasoline Unloading at Bulk Terminals/Plants, Aviation Gasoline Stage I and II, Pipeline Gasoline	Apply the appropriate EIA State Energy Data System (SEDS) consumption ratios
Solvents, Cremation(possibly?)	EPA to develop growth factors
Paved Roads	VMT- based growth rates
Fugitive Dust (Ag – Livestock) and Ag Livestock	Apply 2020/2022 livestock count
Ag Fertilizer	EPA running CMAQ/EPIC

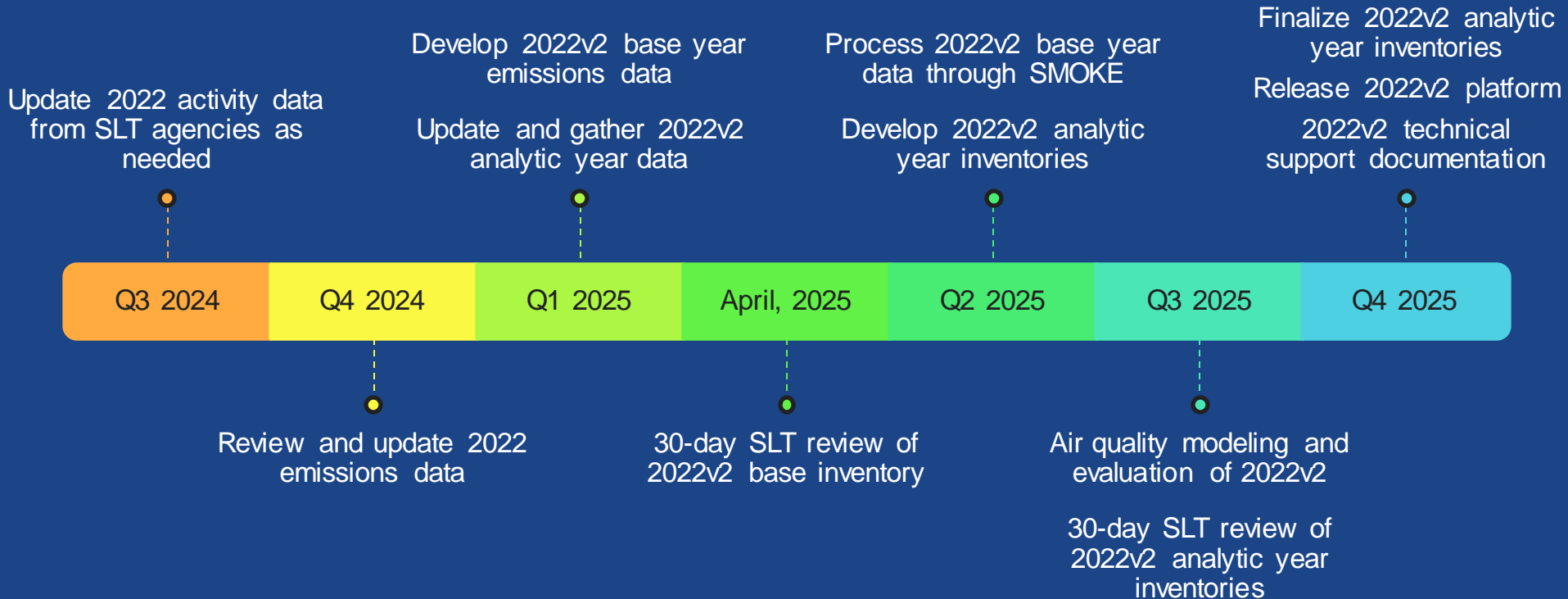
Interested in Participating?

Reach out to Andy Bollman
(andrew.bollman@deq.nc.gov)
or Lindsay Dayton
(dayton.lindsay@epa.gov)

Timeline for 2022v1 Platform Development



Timeline for 2022v2 Platform Development



2022 Platforms and Planning Timelines

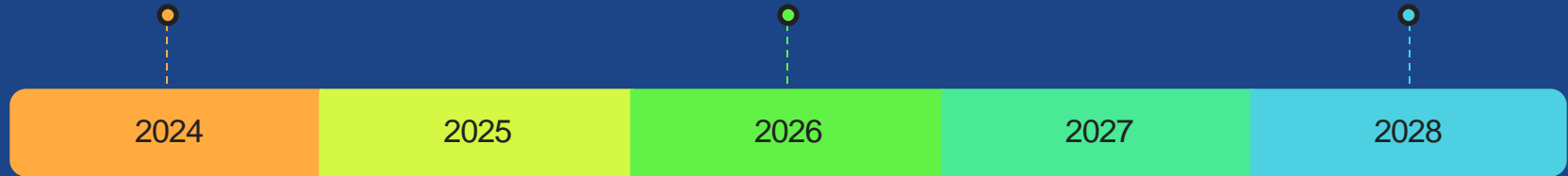
Summer: 2022v1 base year inventories

August: 2015 O3 NAAQS moderate area attainment date

Fall: 2022v1 analytic year inventories

January: 2015 O3 NAAQS Serious NAA SIPs

Summer/Fall: Haze 3rd implementation period SIPs



Summer: 2022v2 base year inventories

Fall: 2022v2 analytic year inventories

August: 2015 O3 NAAQS serious area attainment date

Data review for 2020 and 2022

- The [2020 NEI Data Retrieval Tool](#) allows users to view and download data from the 2020 NEI at the SCC- and county-level for onroad, nonroad, and nonpoint sources, and at the facility-level for point sources.
- Data from the 2022v1 EMP will be imported into this tool, enabling targeted review of emissions for this effort.
- Comments on the 2022v1 EMP can be submitted using a SharePoint form that will be distributed to platform developers and reviewers.



Example use of the 2020 NEI Data Retrieval Tool

Location				Pollutant			
Select one or more				Pollutant Type-Pollutant			
To download data selection, right click on table and select Export data							
Overview		County Level Data		Facility Data			
2020 County-Level Process Data for Mobile and Nonpoint Emissions							
State	State-County	POLLUTANT	Emissions (To...	POLL...	SCC Code	EIS Sector	
Washington	WA - King	PM2.5 Primary (Filt + Cond)	204.22710	CAP	2104009000	Fuel Comb - Residential - Wood	
Washington	WA - King	PM2.5 Primary (Filt + Cond)	374.77710	CAP	2104008100	Fuel Comb - Residential - Wood	
Washington	WA - King	PM2.5 Primary (Filt + Cond)	418.12060	CAP	2104008700	Fuel Comb - Residential - Wood	
Washington	WA - King	PM2.5 Primary (Filt + Cond)	233.20000	CAP	2104008230	Fuel Comb - Residential - Wood	
Washington	WA - King	PM2.5 Primary (Filt + Cond)	307.74590	CAP	2104008220	Fuel Comb - Residential - Wood	
Washington	WA - King	PM2.5 Primary (Filt + Cond)	469.48080	CAP	2104008210	Fuel Comb - Residential - Wood	
Washington	WA - King	PM2.5 Primary (Filt + Cond)	226.29040	CAP	2104008330	Fuel Comb - Residential - Wood	
Washington	WA - King	PM2.5 Primary (Filt + Cond)	298.62750	CAP	2104008320	Fuel Comb - Residential - Wood	
Washington	WA - King	PM2.5 Primary (Filt + Cond)	455.57030	CAP	2104008310	Fuel Comb - Residential - Wood	
Washington	WA - King	PM2.5 Primary (Filt + Cond)	23.77316	CAP	2104008400	Fuel Comb - Residential - Wood	
Totals			3,011.81286				

Example use of the 2020 NEI Data Retrieval Tool

Location

Select one or more

Pollutant

Pollutant Type-Pollutant

To download data selection, right click on table and select Export data

Overview
County Level Data
Facility Data

2020 County-Level Process Data for Mobile and Nonpoint Emissions

State	State-County	POLLUTANT	Emissions (To...	POLL...	SCC Code	EIS Sector
Washington	WA - King	PM2.5 Primary (Filt + Cond)			04009000	Fuel Comb - Residential - Wood
Washington	WA - King	PM2.5 Primary (Filt + Cond)			04008100	Fuel Comb - Residential - Wood
Washington	WA - King	PM2.5 Primary (Filt + Cond)			04008700	Fuel Comb - Residential - Wood
Washington	WA - King	PM2.5 Primary (Filt + Cond)			04008230	Fuel Comb - Residential - Wood
Washington	WA - King	PM2.5 Primary (Filt + Cond)			04008220	Fuel Comb - Residential - Wood
Washington	WA - King	PM2.5 Primary (Filt + Cond)			04008210	Fuel Comb - Residential - Wood
Washington	WA - King	PM2.5 Primary (Filt + Cond)			04008330	Fuel Comb - Residential - Wood
Washington	WA - King	PM2.5 Primary (Filt + Cond)	298.62750	CAP	2104008320	Fuel Comb - Residential - Wood
Washington	WA - King	PM2.5 Primary (Filt + Cond)	455.57030	CAP	2104008310	Fuel Comb - Residential - Wood
Washington	WA - King	PM2.5 Primary (Filt + Cond)	23.77316	CAP	2104008400	Fuel Comb - Residential - Wood
Totals			3,011.81286			

- View data
- Export as an image
- Export to PDF
- Export data

2022v1 Data Review Kickoff

- Wednesday March 27 @ 1 PM Eastern
- Webinar to learn how to use the online Emissions Data Retrieval Tool to review 2022 data and enter comments for the April review

Notice!!!

The 2022v1 data review is the process through which air agencies and stakeholders can review/comment on the 2022 base year data

Microsoft Teams meeting

[Click here to join the meeting](#)

Meeting ID: 214 896 643 619

Passcode: ukK3Br

[Join on the web](#)

Or call in (audio only) [+1 323-676-6261](#)

Phone Conference ID: 390 220 484#

Stay Informed

- 2022EMP Wiki at Intermountain West Data Warehouse (IWDW)
- 2022v1 web page now available on EPA site: <https://www.epa.gov/air-emissions-modeling/2022v1-emissions-modeling-platform>
- Quarterly outreach calls
 - 1st Wednesday in May, August, November @ 2 p.m. Eastern
- Attend workgroup meetings
 - MJO MOVES, EGU, NOMAD, NOGEC, projections, fires, ...
- Participate in data reviews



[2022 EMP Wiki](#)

Next Steps

- S/L/T agencies can:
 - Participate in workgroup meetings
 - Work with other inventory contacts in your region to review the data
 - Explore the 2022v1 data available in April
- Workgroups will proceed with reviewing data
- Next quarterly call: May 1, 2024 @ 2 PM Eastern
- Email [Mary Uhl](#) if you are not already on the email list and want to be added

